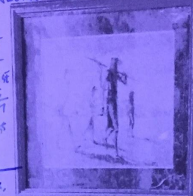


LINE BETWEEN
LAND + WATER
BIVALVES, ANIMISM,
DUALITY BUT ~~NOT~~ THE
PERSON AT THE BOUNDARY -
THE SCATTERING OF LANGUAGE
+ CODES, APPRECIATION
INTERLUDES, A THREAT
NEARBY THE BORDER -
~~THE~~ ~~THE~~ ~~THE~~ ~~THE~~ ~~THE~~ ~~THE~~ ~~THE~~
DANCE THE RHYTHMS OF
DANCE THE RHYTHMS OF
DANCE THE RHYTHMS OF
DANCE THE RHYTHMS OF
DANCE THE RHYTHMS OF

STREET / CONFLUENCE AS IF A BOUNDARY
DANIELA W
LUSTY Y ~~CONFLUENCE~~



CONFLUENCE AS IF A BOUNDARY
DANIELA W
LUSTY Y ~~CONFLUENCE~~



CONFLUENCE AS IF A BOUNDARY
DANIELA W
LUSTY Y ~~CONFLUENCE~~

CONFLUENCE AS IF A BOUNDARY
DANIELA W
LUSTY Y ~~CONFLUENCE~~

CONFLUENCE AS IF A BOUNDARY
DANIELA W
LUSTY Y ~~CONFLUENCE~~





