



BUDDY

A service to bridge the known to the unknown



Who & What it's for?

“Buddy” is to enable these young people to go through the dramatic change of environment in a stable emotional status.

It is also a tool for college student support to better support their student with BPD.

“Buddy” is a smart object that could simulate physical interaction and access information and network conveniently via smart phone.

Why ?

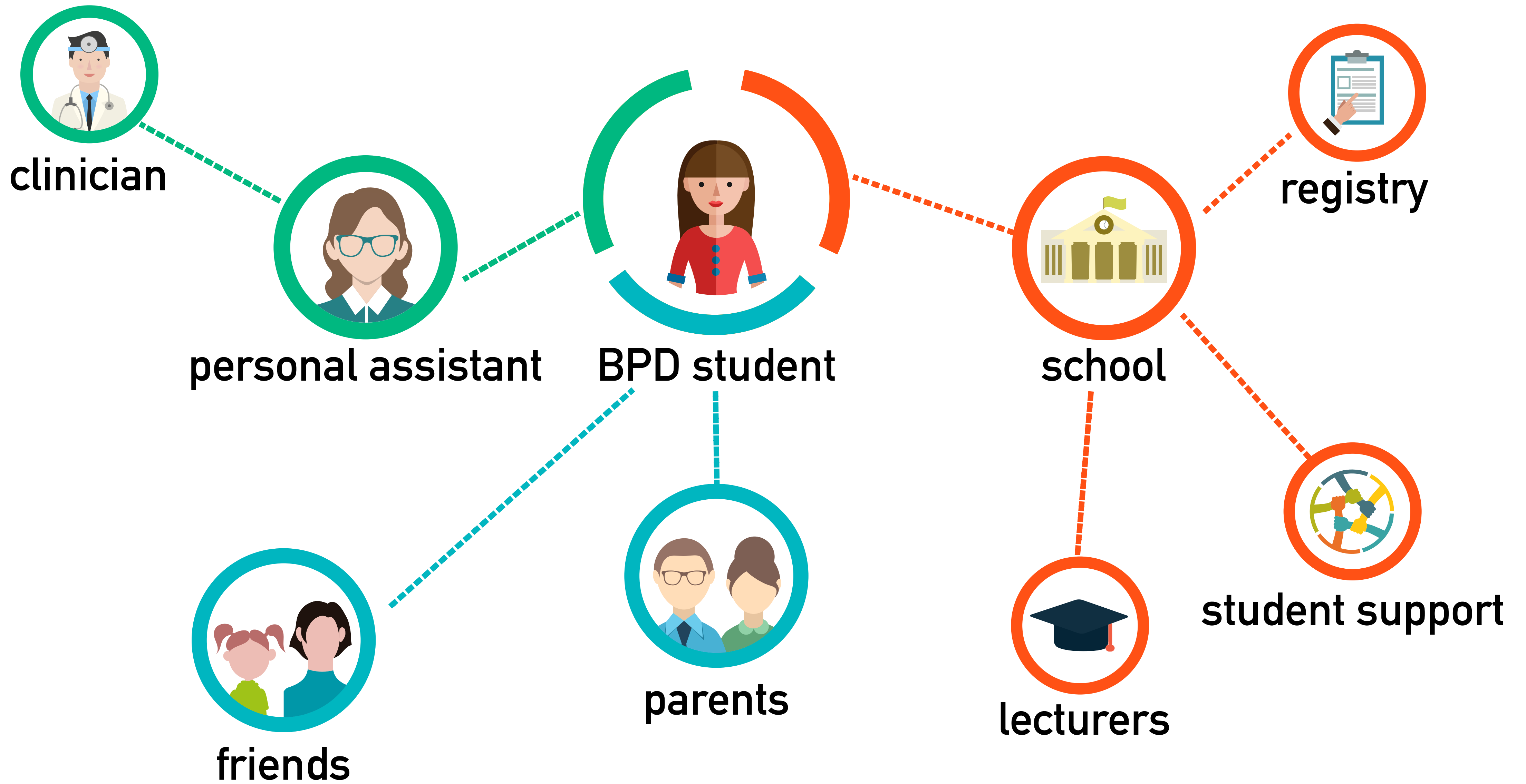
“They(people with BPD) experience intense abandonment fears and inappropriate anger..when faced with ..separation or..changes...”

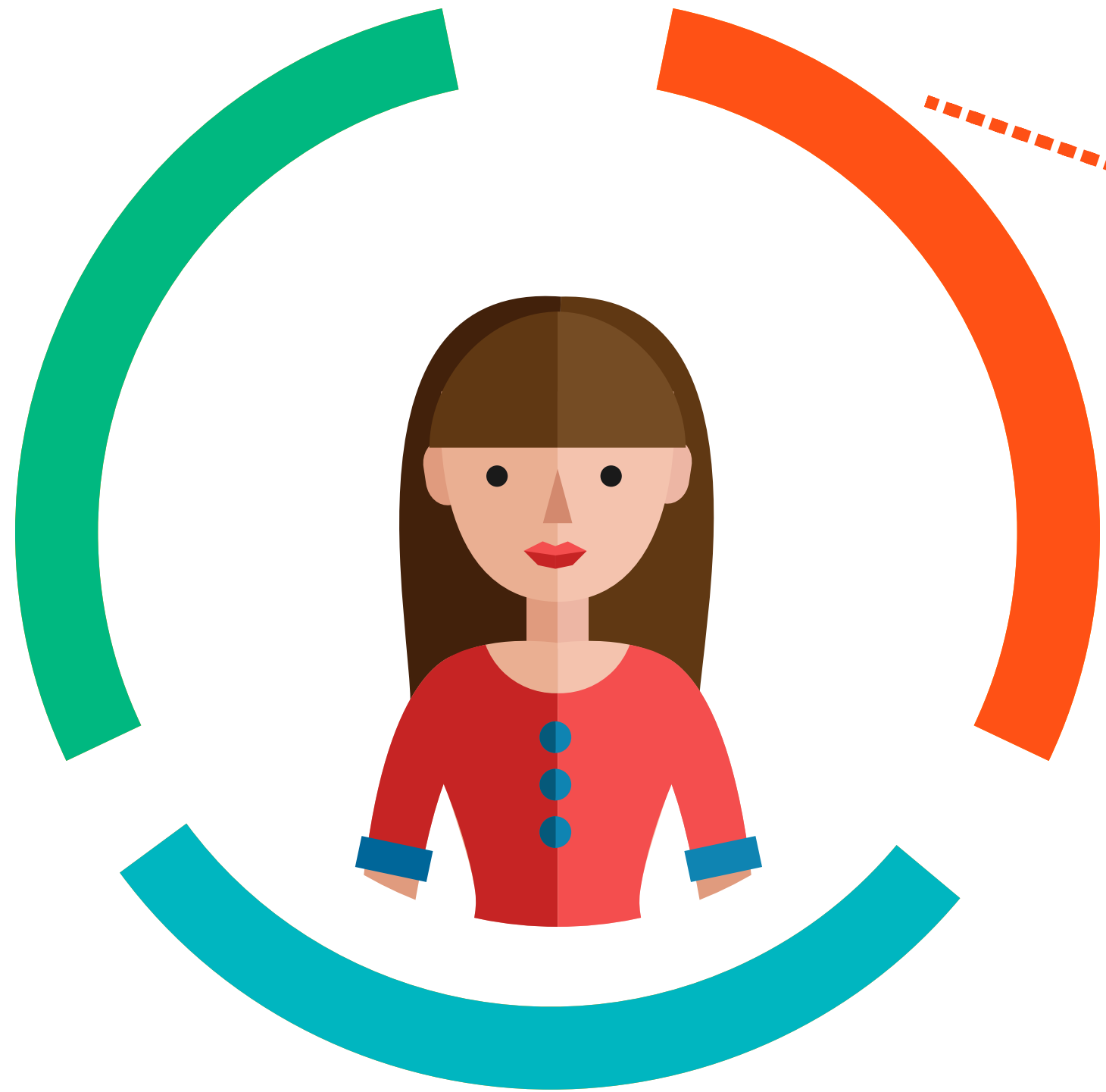
“People with Borderline Personality Disorder are one of the groups most closely associated with comfort objects.” (<http://www.wardipedia.org>)

The inconvenience of gaining information and reaching out will result in disconnection.

What is it?

- A comfort object to bridge the known to the unknown
- A tangible interaction with support network
- Embedded digital functions to stay connected





BPD student



school



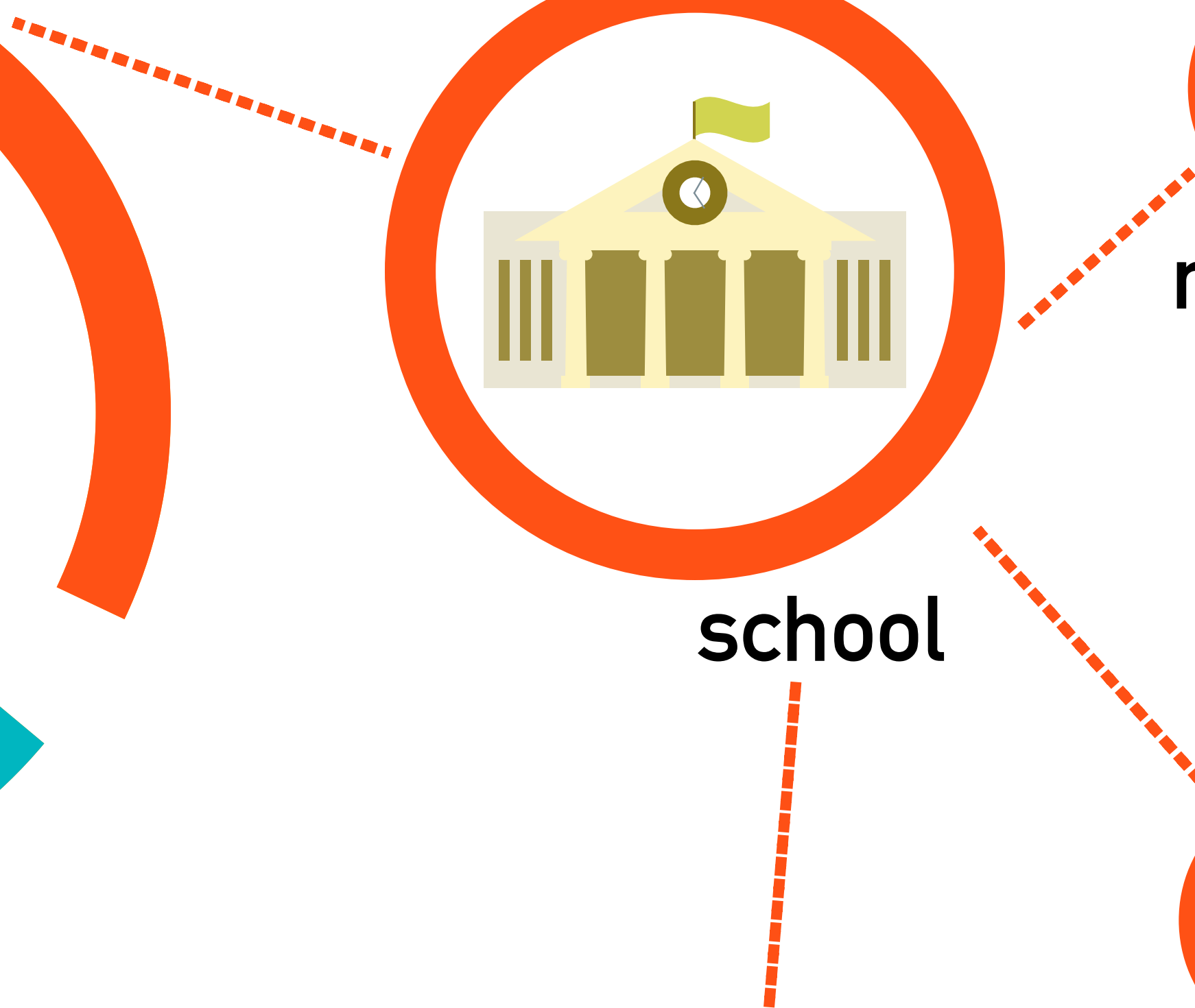
registry



student support



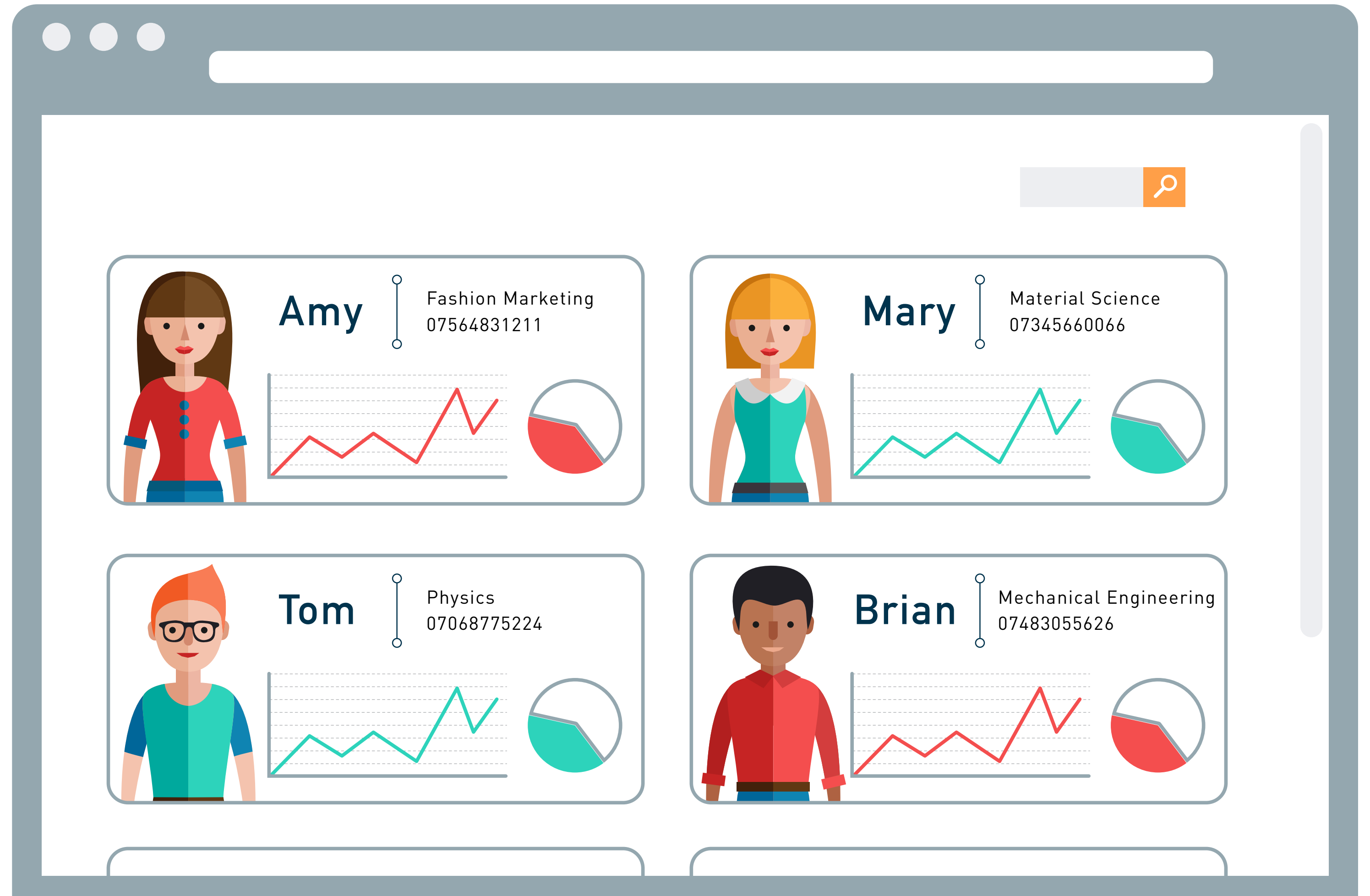
lecturers





School

A platform for school support team to keep the track of every student who has signed up BUDDY





School

A platform for school support team to keep the track of every student who has signed up BUDDY



Comfort Object



Connected

The BUDDY app help Amy to learn herself more and prepare her to start a new life in London



Set up Contact

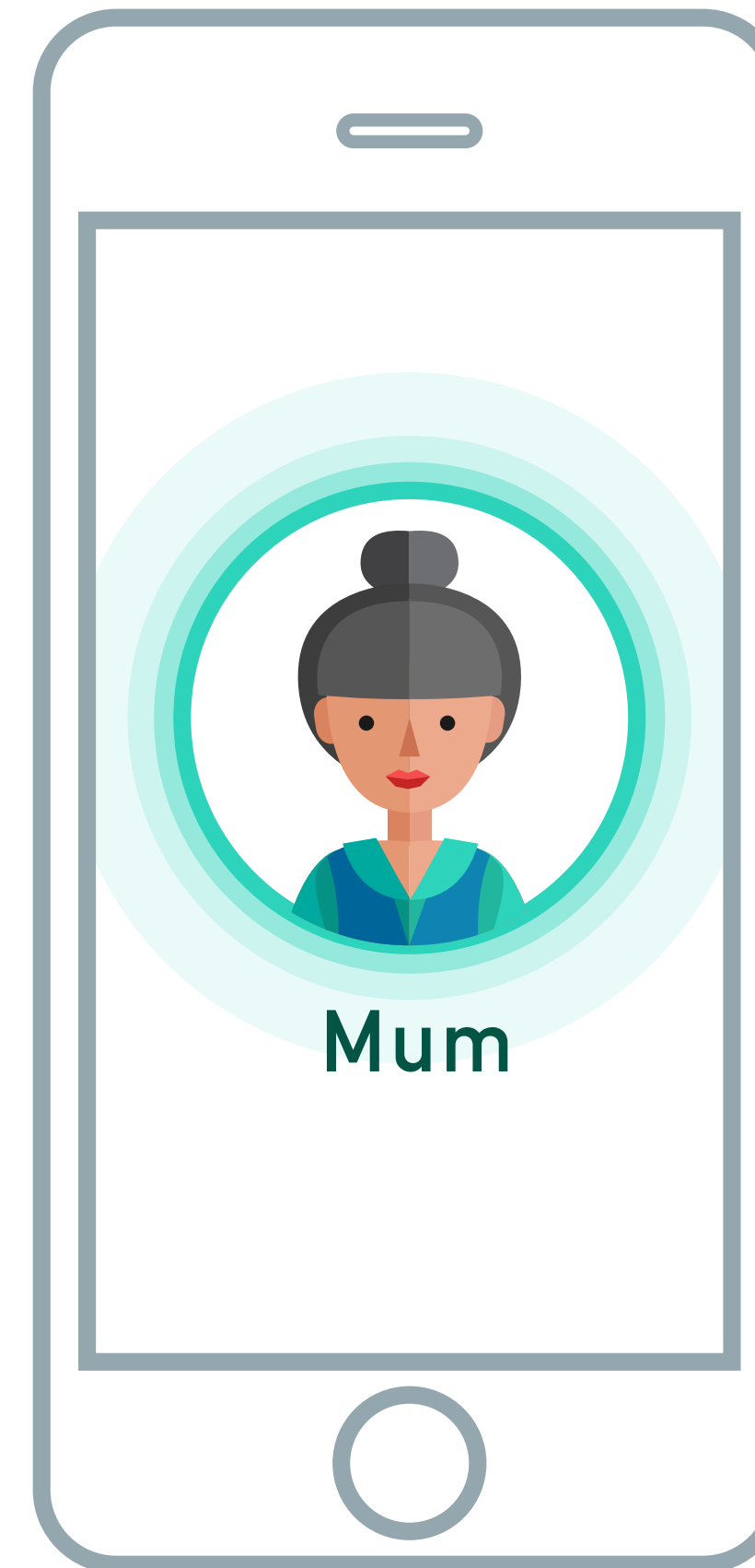
Always stay in touch with someone you trust. An anxious-free experience.

London, UK

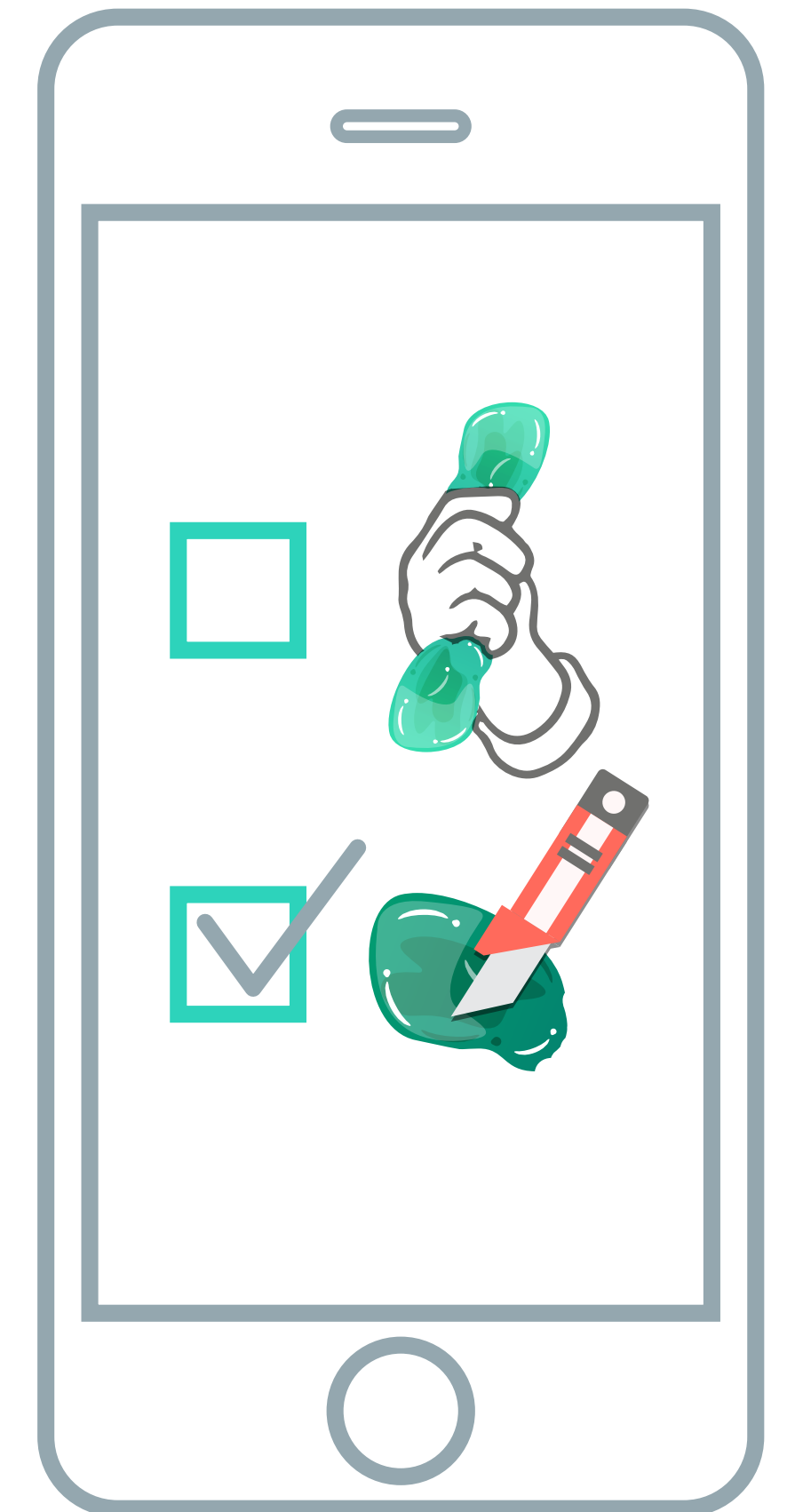


Auto-connect to school

New York, U.S.A.



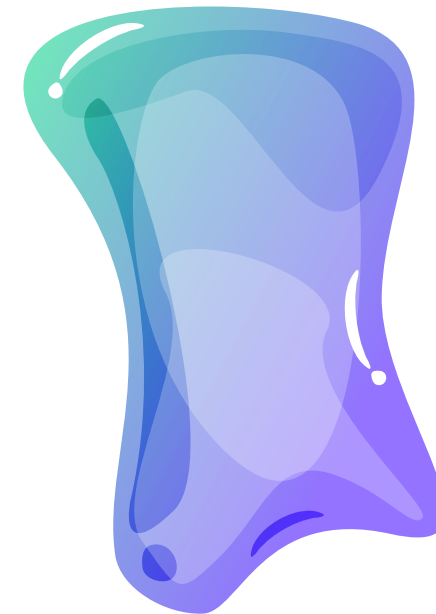
connect to people you trust



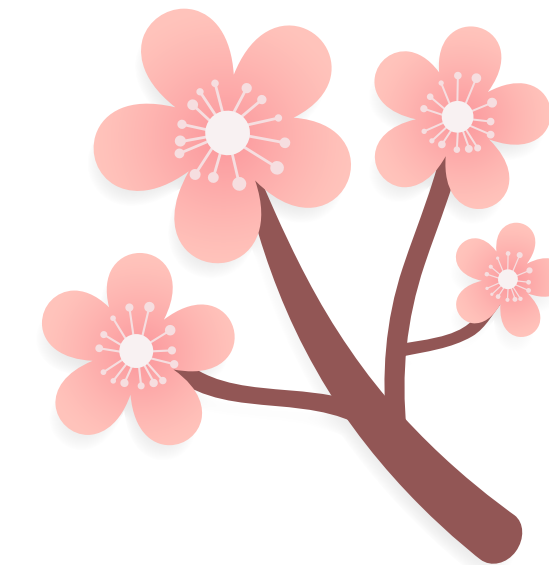
emergency contact

Customisation

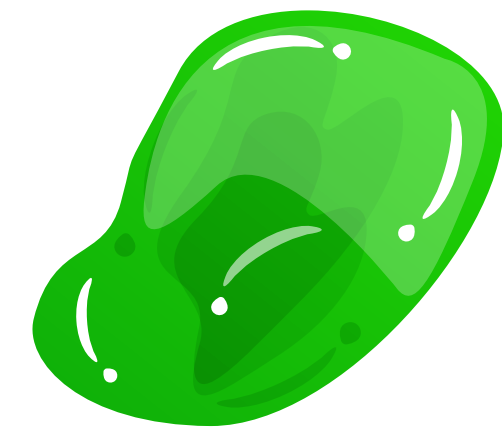
color



smell



shape



Share with your peers

Amy can tear BUDDY apart and leave the part at home.



Operating Features

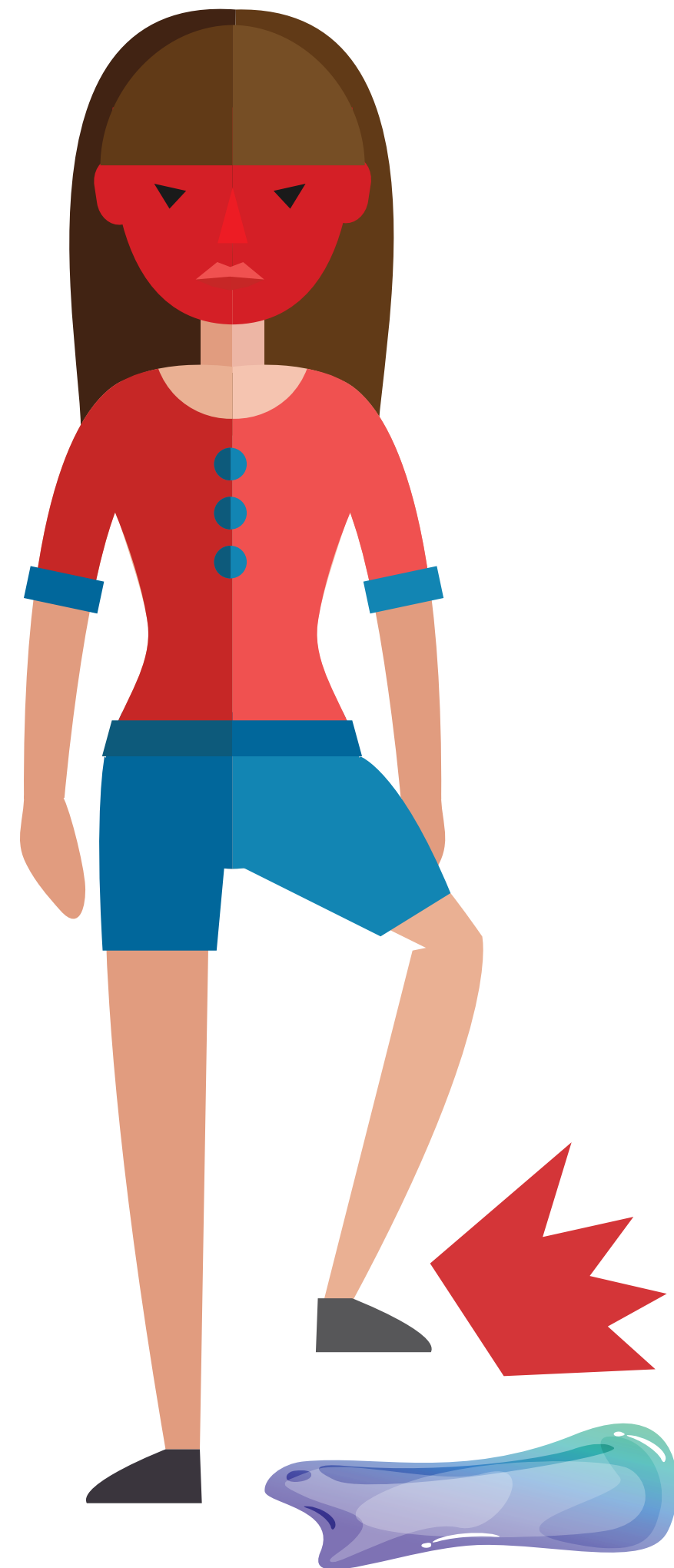
intuitive and convenient to access and connect



microphone
sending message

Operating Features

something to shake, squeeze or even talk to



shock resistant
elastic material



Operating Features

a data library to understand BPD more



heart rate sensor

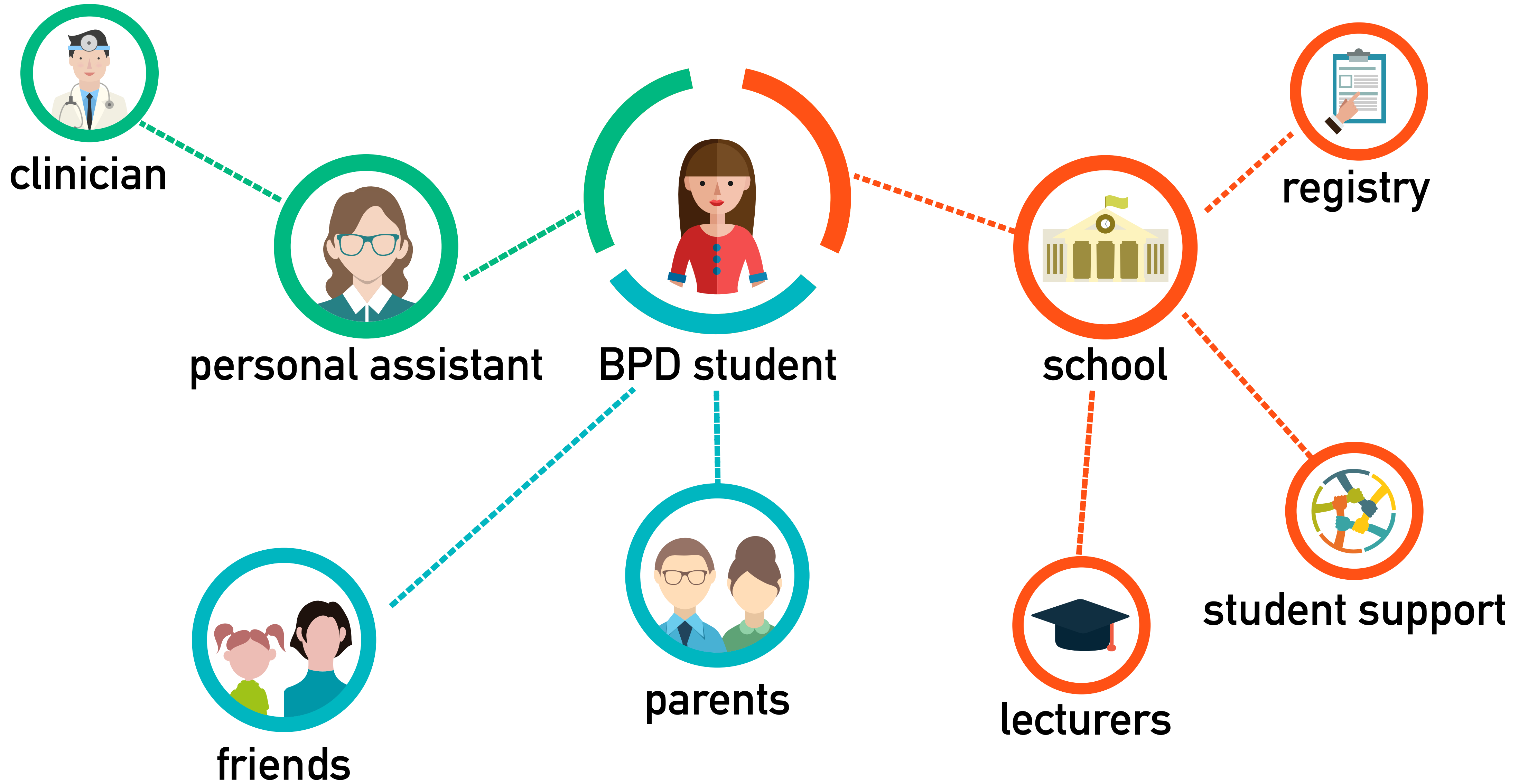
pressure sensor

GSR sensor

A user profile card for Amy. On the left is a cartoon illustration of a woman with long brown hair, wearing a red top and blue skirt. To the right of the illustration is the name "Amy" in a large, dark blue font. Further right is a vertical line with small circles at the ends, followed by the text "Fashion Marketing" and "07564831211". Below the name and contact information are two data visualization charts: a line graph with a red line showing fluctuations, and a pie chart with a red slice.

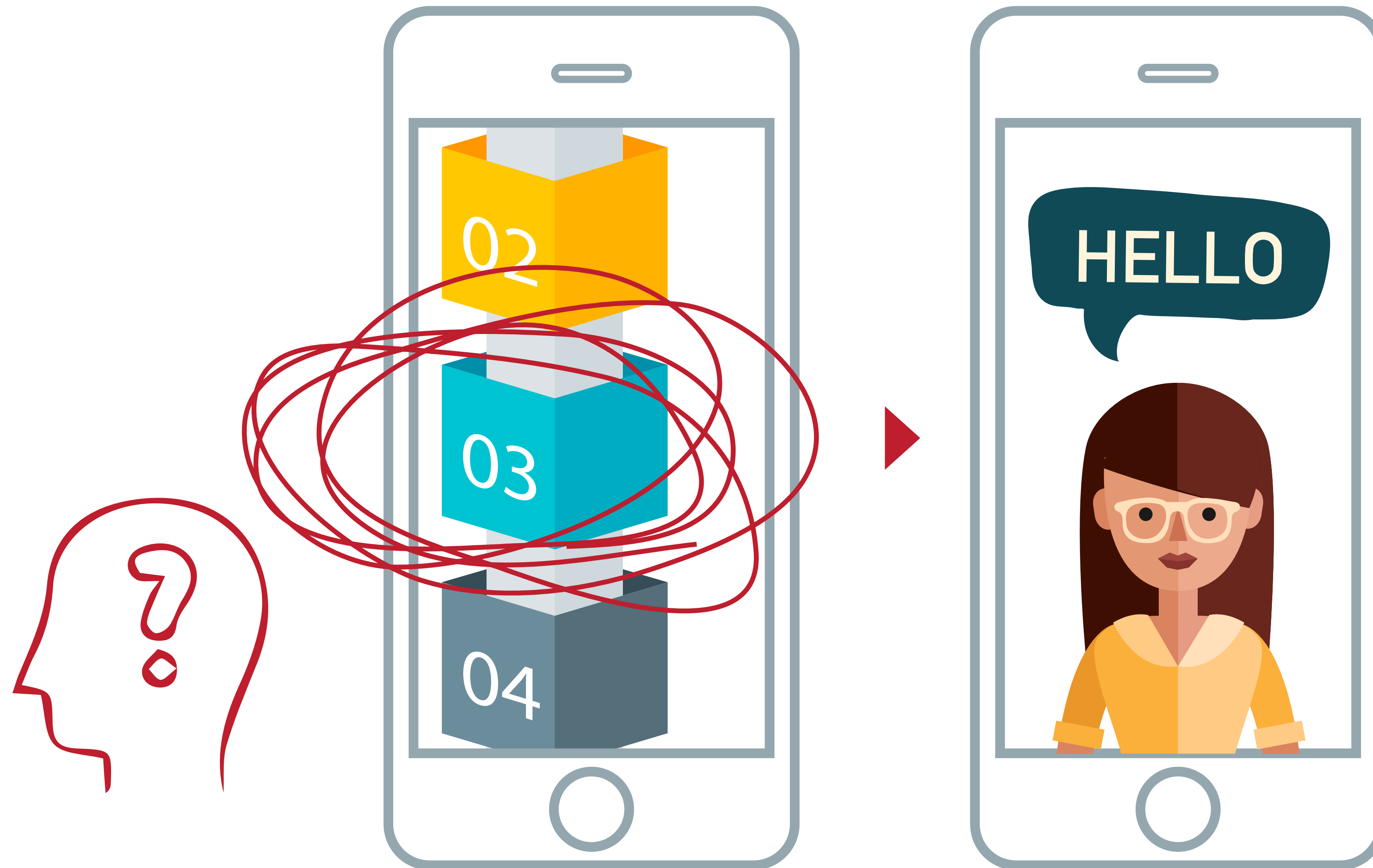
Support





Gamify your new Life step by step





Personal Assistant

If Amy has clutter in mind or difficulty to proceed, a personal assistant has assigned to her for helping her out.

Anger Alert

When Amy squeezes BUDDY too much, BUDDY knows that she is in crisis and it will contact school and her mom right away.



BUDDY

A service to bridge the known to the unknown

